


Bestway®

www.bestwaycorp.com

Lay-Z-Spa™

Visit Bestway YouTube channel 

**FOR INSTRUCTION VIDEOS
PLEASE VISIT**

www.bestwaycorp.com/support



CONTENTS

1. Safety Instructions	P3
2. Assembly	P9
3. Operation	P10
4. Maintenance	P12
5. Troubleshooting	P15



SAFETY INSTRUCTIONS

When installing and using this electrical equipment, basic safety precautions should always be followed, including the following:

IMPORTANT SAFETY INSTRUCTIONS - READ AND FOLLOW ALL INSTRUCTIONS.

WARNING:

- The spa must be supplied through an isolating transformer or supplied through a residual current device (RCD) having a rated residual operating current not exceeding 30mA.
- The pump must be tested before each use. To test, follow the instructions in the “Pump Test” section of this manual.
- If the supply cord is damaged, it must be replaced by the manufacturer, service agent or similarly qualified persons in order to avoid a hazard.
- To reduce the risk of electric shock, do not use extension cord to connect unit to electric supply; provide a properly located outlet.
- No part of the appliance is to be located above the bath during use.
- Parts containing live parts, except parts supplied with safety extra-low voltage not exceeding 12V, must be inaccessible to a person in spa pool; Parts incorporating electrical components, except remote control devices, must be located or fixed so that they cannot fall into the spa pool.
- The plug of pump shall be more than 3.5m away from the spa.
- It is necessary to have the plug accessible after installation of the spa.

CAUTION: In order to avoid a hazard due to inadvertent resetting of the thermal cut-out, this appliance must not be supplied through an external switching device, such as a

timer, or connected to a circuit that is regularly switched on and off by the utility.

After using your spa for 3-5 years, you should contact your local qualified maintenance technician to ensure the safety and performance of the spa. The main components, such as heating element, air blower motor and non-return valves within the electric unit should be checked and replaced (if necessary) by professional persons.

Warning: Always keep plug dry, plug in with wet plug is definitely forbidden!

- The plug shall be directly connected only to a socket-outlet of the fixed electrical installation.
The spa must be supplied by earthed power source.
- **TO AVOID ELECTRIC SHOCK, DO NOT USE THE SPA WHEN IT IS RAINING.**
- Never wear your contact lenses when in your spa.
- Do not use spa during chemical maintenance.
- Extension cords cannot be used.
- Don't plug or unplug the appliance if your hands are wet.
- Always unplug the appliance:
 - on rainy days
 - before cleaning or other maintenance
 - if you leave it unattended on holidays
- When the appliance will be not used for a long time, such as in the winter, the spa or pool set should be disassembled and stored indoors.
- **Caution:** Read the instructions before using the appliance and every time you install or reassemble the appliance.
- Keep the instructions safe. If the instruction is missing, please contact the manufacturer or download a copy from www.bestwaycorp.com
- **Warning: For electric safety, a PRCD is incorporated in the power cord. If current leakage of more than 10mA is detected, the device will operate and cut off the power supply. In such a case, please unplug and stop using the spa at once. Don't reset the product by yourself. You must contact the local service agent to check and repair the product.**
- This appliance is not intended for use by persons (including children) with reduced physical, sensory or mental capabilities, or lack of experience and knowledge, unless

they have been given supervision or instruction concerning use of the appliance by a person responsible for their safety. Children should be supervised to ensure that they do not play with the appliance. (For market other than EU)

- This appliance can be used by children aged from 8 years and above and persons with reduced physical, sensory or mental capabilities or lack of experience and knowledge if they have been given supervision or instruction concerning use of the appliance in a safe way and understand the hazards involved. Children shall not play with the appliance. (For EU market)
- Cleaning and user maintenance must be performed by an adult above 18 years old who is familiar with the risk of electric shock;
- Water attracts children; always attach a spa cover after each use.
- Do not bury cord. Locate cord to minimize abuse from lawn mowers, hedge trimmers, and other equipment.
- Risk of Accidental Drowning. Extreme caution must be exercised to prevent unauthorized access by children. To avoid accidents, ensure that children can not use this spa unless they are supervised at all times.
- **RISK OF INJURY.** Never operate spa if inlet / outlet pipes are broken or missing. Never attempt to replace the inlet / outlet pipes. Always consult your local Aftersales Centre.
- **RISK OF ELECTRIC SHOCK.** Install at least 2m from all metal surfaces.
- **RISK OF ELECTRIC SHOCK.** Never operate any electrical appliance when in your spa or when your body is wet. Never place any electric appliance, such as a light, telephone, radio, or television, within 2m of spa.
- During pregnancy, soaking in hot water may cause damage to the fetus. Limit use to 10 minutes at a time.
- **TO REDUCE THE RISK OF INJURY:**
 - A. The water in a spa should never exceed 40°C (104°F). Water temperature between 38°C (100°F) and 40°C (104°F) is considered safe for a healthy adult. Lower water temperatures are recommended for young children and when spa use exceeds 10 minutes.
 - B. Since excessive water temperatures have a high potential for causing fetal damage during the early months of

pregnancy, pregnant or possibly pregnant women should limit spa water temperature to 38°C (100°F).

- C. Before entering a spa, the user should measure the water temperature with an accurate thermometer since the tolerance of water temperature regulating device varies.
- D. The use of alcohol, drugs, or medication before or during spa use may lead to unconsciousness with the possibility of drowning.
- E. Obese persons and persons with a history of heart disease, low or high blood pressure, circulatory system problems, or diabetes should consult a physician before using a spa.
- F. Persons using medication should consult a physician before using a spa since some medication may induce drowsiness while other medication may affect heart rate, blood pressure, and circulation.
- **TO REDUCE THE RISK OF INJURY:** Never pour water with a temperature higher than 40°C (104°F) directly into the spa pool.
- The use of alcohol, drugs, or medication can greatly increase the risk of fatal hyperthermia. Hyperthermia occurs when the internal temperature of the body reaches a level that is several degrees above the normal body temperature of 37°C (98.6°F). The symptoms of hyperthermia include an increase in the internal temperature of the body, dizziness, lethargy, drowsiness, and fainting. The effects of hyperthermia include failure to perceive heat; failure to recognize the need to exit spa or hot tub; unawareness of impending hazard; fetal damage in pregnant women; physical inability to exit the spa or hot tub; and unconsciousness resulting in the danger of drowning.
- Electric installations should follow national wiring rules, consult a qualified electrician with any questions.

CONSULT YOUR PHYSICIAN FOR RECOMMENDATIONS.

CAUTION:

- The spa should not be setup or left out in temperature lower than 4°C (40°F).
- Do not use the spa alone.
- People with infectious diseases should not use a spa.
- Do not use the spa immediately following strenuous

exercise.

- Always enter and exit the spa slowly and cautiously. Wet surfaces are slippery.
- To avoid damage to the pump, the spa must never be operated unless the spa is filled with water.
- Immediately leave spa if the user feels uncomfortable or sleepy.
- Never add water to chemicals. Always add chemicals to water to avoid strong fumes or violent reactions that may result in hazardous chemical spray.
- Regarding the information pertaining to cleaning, maintenance of water, and disposal of water, please see section "MAINTENANCE".
- Regarding the information pertaining to the installation, thanks to refer to the below paragraph of the manual.

NOTE:

- Please examine equipment before use. Notify Bestway at the customer service address listed on this manual for any damaged or missing parts at the time of purchase. Verify that the equipment components represent the models that you had intended to purchase.
- This product is not intended for commercial use.

WARNING FOR ELECTRIC AIR PUMP (For Palm Springs HydroJet):

The electric air pump is not a part of spa. You should refer to the user manual of electric air pump for safety. Extension cord used for the air pump when inflating the pool is strictly forbidden to be used for the spa. After inflation of the pool, the air pump, as well as extension cord must be disconnected from supply mains and stored indoor place.

Motor run time should not exceed 20 minute

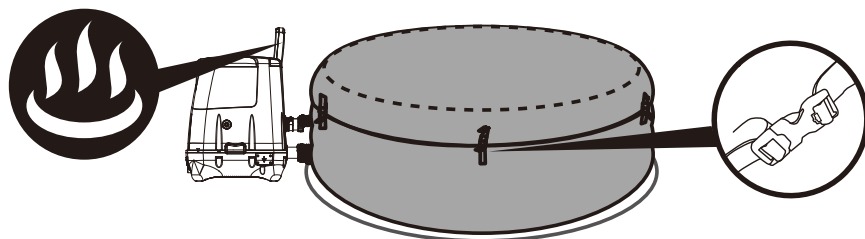
CAUTION: TO AVOID THE RISK OF ELECTRIC SHOCK, DO NOT EXPOSE TO WATER OR RAIN. FOR HOUSEHOLD USE ONLY.

SAVE THESE INSTRUCTIONS

IMPORTANT !

To reach 40°C (104°F), the heating duration required is based on the starting water temperature and ambient temperature, the data below is purely for reference. To display the current water temperature, run the filter system for at least a minute.

Ambient Temperature	Water Temperature	Set Temperature	Heating Duration
10°C(50°F)	10°C(50°F)	40°C(104°F)	18.5h-21.5h
15°C(59°F)	15°C(59°F)	40°C(104°F)	15h-18h
20°C(68°F)	20°C(68°F)	40°C(104°F)	11.5h-14.5h
25°C(77°F)	25°C(77°F)	40°C(104°F)	8.5h-11h
30°C(86°F)	30°C(86°F)	40°C(104°F)	5.5h-7.5h



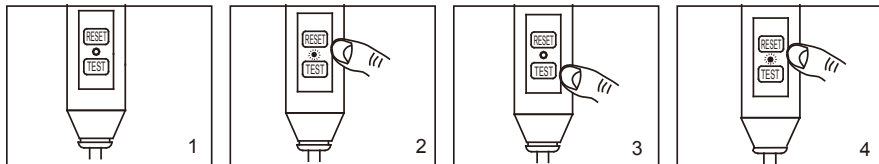
Be sure to cover the spa with the spa cover whenever the heating function is activated. Leaving the spa uncovered will increase the heating duration required.

Please do not use the spa when ambient temperature is lower than 4°C (39°F).

SPECIFICATION	HYDROJET	HYDROJET PRO
Power Rate	220-240V AC,2060W	220-240V AC,2060W
Heat Element Power	2,000W at 20°C	2,000W at 20°C
Filter Pump Power	50W	50W
Massage Tube Power	-	800W
Jet Pump Power	1200W	1200W
Soft Water System	10W	10W

Pump Test

PRCD Test



NOTE: Drawings for illustration purpose only. May not reflect actual product. Not to scale.

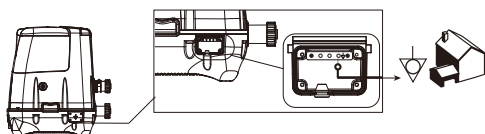
1. Insert the plug.
2. Press the "RESET" button, the indicator light turns on.
3. Press the "TEST" button, the indicator light turns off.
4. Press the "RESET" button, the indicator light turns on.
5. Press the "On/Off" button for 2 seconds, your pump is ready to use.



WARNING: The PRCD plug must be tested before each use to avoid risk of electric shock.

WARNING: Before inserting plug into a power outlet, make sure the current rate of the power outlet is suitable for the pump.

WARNING: Do not use the pump if this test fails and contact our Customer Service.



SPA PUMP EQUIPOTENTIAL BONDING TERMINAL

It is recommended to arrange for a qualified electrician to connect the spa pump to an equipotential bonding terminal using a minimum 2.5mm² solid copper conductor.

ASSEMBLY

WARNING: The selected location has to be able to support of supporting the expected load.

WARNING: An adequate drainage system has to be provided to deal with overflow water for both indoor and outdoor installations.

NOTE: Only the Hydro-Jet Pro spa has the Lay-Z-Massage system button. When inflating, you will notice that air will be expelled from the area where the air hose connects to the pump, this is normal and prevents damage due to over-inflation.

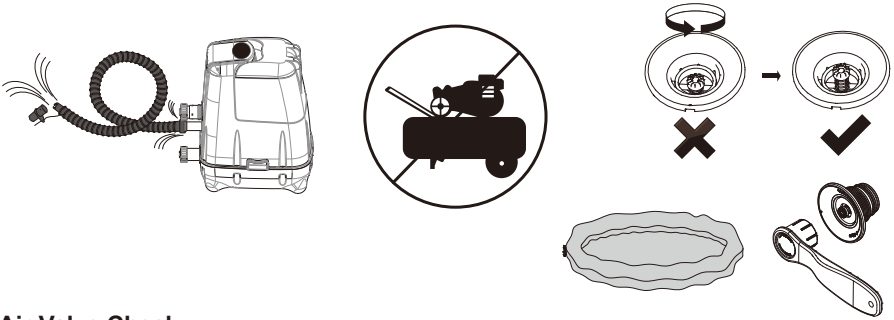
NOTE: Do not use an air compressor to inflate the pool.

NOTE: Do not drag the pool on rough ground as this may cause

damage to the pool liner.

NOTE: Inflation time is for reference only.

NOTE: Pressure gauge is for inflation purpose only, and the value shown by the pressure gauge is just for reference. It should not be used as a precision instrument.



Air Valve Check

Always check the air valve carefully before inflation to ensure there is not an air leak. If the air valve is loose, use the provided wrench to fasten the air valve following these steps:

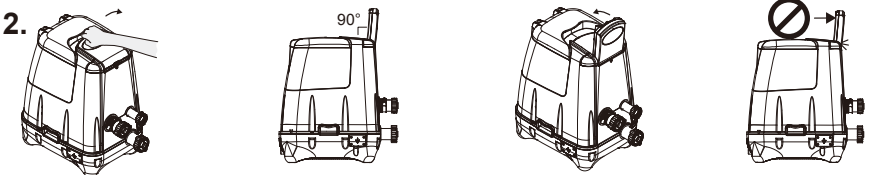
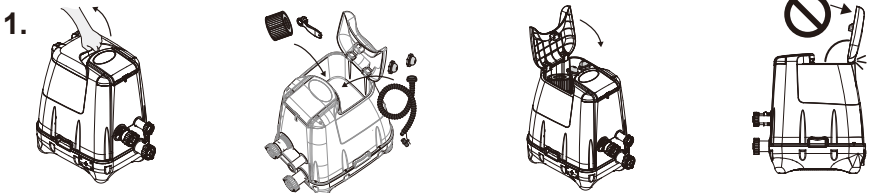
With one hand, hold the backside of the air valve from the inner side of the spa wall and turn the wrench clockwise.

NOTE:

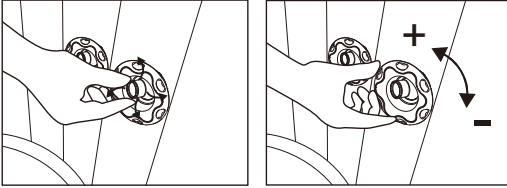
- 1. Do not over tighten.
- 2. Do not adjust the air valve connector when the spa is in use.

Please refer to the provided Instructional page

OPERATION

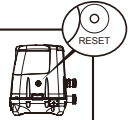


3. Adjustment of Jet Nozzle



4. Heating Reset

When using the Lay-Z-Spa for the first time, or after a long period of inactivity, be sure to press the reset button on the pump using a small and thin object.



RESET BUTTON IMPORTANT INSTRUCTIONS FOR USE

If the temperature on the control panel (or the water temperature) has not changed 4-5 hours after activation of the heating system, use a thin object to press the RESET BUTTON and restart the heating system.

IMPORTANT: The heating System will not operate if the outside temperature is above 40°C (104°F) or if the Lay-Z-Spa is under direct sunlight. Under these conditions, please wait until a cooler time of day before pressing the RESET BUTTON with a thin object and restart the heating System. This operation must be repeat everytime when the pump is under above conditions.

Item code	Description	Inner diameter (cm)
54138	Maldives Hydrojet Pro	130 × 130
54144	Hawaii Hydrojet Pro	146
54173	Plam Springs Hydrojet	151 × 151

Lock/Unlock Button
The pump has a 5-minute auto-lock. The LED light will dim out when the pump is locked (no function is activated). To lock or unlock the pump, place a finger over the lock/unlock button for 3 seconds.

Lay-Z-Massage System Button (For Hydro-Jet Pro)
Use this button to activate the massage system, which has a 30-minute auto-shutoff feature.
The light above the Lay-Z-Massage system button displays red when activated.

IMPORTANT: Do not run the Lay-Z-Massage system when the cover is attached. Air can accumulate inside the spa and cause irreparable damage to the cover and bodily harm.
NOTE: Heat and massage system work together to create a warm massage experience.

HydroJet System Button
This button turns the water pump on and off.
The light above the HydroJet system button displays red when activated.
Note: The system will shut off automatically after 1 hour.
Note: Do not dry run the HydroJet System.

Heat Button
Use this button to activate the heating system. When the light above the heat button is red, the heating system is activated. When the light is green, the water is at the set temperature and the heating system is at rest.
NOTE: If the heating system is activated, the filtration system will automatically start.
NOTE: After turning off the heating system, the filtration system will continue to operate.

Water Filter Button
This button turns the filter pump on and off.
The light above the Water Filter Button displays red when activated.
NOTE: The built-in hard water treatment function works automatically.

Power-Saving Timer Button
This is a newly added function, designed to help avoid wasting power by setting the time and duration of the heating cycle for the spa.
This way, you can enjoy your spa at the time you desire, without needing to leave the heater on at all times.

- STEP 1:** Set the heating duration
1. Press the button until the LED starts to flash.
 2. Press the or button to adjust the heating duration (From 1-48 hours).
 3. Press the button again to confirm the heating duration.
- STEP 2:** Set the number of hours FROM NOW when the heater will activate
1. After setting the heating duration, the LED starts to flash.
 2. Press the or button to adjust the hours until time of activation (From 0-99 hours).
 3. Press button again or simply touch nothing for 10 seconds to confirm the setting. The LED will light steadily, and the countdown to heater activation will begin.

To modify the timer settings: Press the button and use the or button to adjust.
Cancel the setting: Press the button for 2 seconds.

NOTE: After setting, the screen flashes the current temperature and time alternately.

HYDROJET PRO



HYDROJET



NOTE: Timer adjustment (amount of time with the heater ON) may be set from 1 to 48 hours; Reservation time adjustment (the number of hours FROM NOW when the heater will begin to function) may be set from 0 to 99 hours. If the timer is set at 0 hour, it means the Timer function is not set.
Note: that the timer is one time per use - the user sets the duration of the heating cycle, and how many hours from now the heating cycle begins. The timer does NOT repeat until reset.

Celsius/Fahrenheit Toggle
The temperature can be displayed in either Celsius or Fahrenheit.

Temperature Adjustment Buttons
Pressing the Temperature Increase or Decrease buttons will cause the LED to flash. When it is flashing you can adjust to the desired temperature setting. If you hold these buttons down, the values will rapidly increase or decrease. The new and desired temperature setting will remain on the LED display for 3 seconds to confirm the new value.
NOTE: The default temperature is 35°C (95°F).
NOTE: Temperature adjustment ranges from 20°C (68°F) to 40°C (104°F).












Power-Saving Timer LED
This LED flashing means you are setting the heating duration. The light will be on when the heating function starts to work.
This LED flashing means you are setting the number of hours FROM NOW when the heater will activate. When the light is on, the Power-Saving Timer function is set.

On/Off Button
Press this button for 2 seconds to activate the control panel buttons and the light turns to green.
Press this button for 2 seconds to turn off all currently activated functions.

LED Display
Once powered up, the LED displays the current water temperature automatically. After 72 hours of filtration (without using the power saving timer function), the pump will hibernate and flash "End" with the current water temperature. When the pump is hibernating both the heating and water filter functions are disabled. To re-activate the pump press lock/unlock button for 3 seconds.

NOTE: The water heat rate may change in the below conditions:
- When the outdoor temperature is below 15°C (59°F).
- If the cover is not in position when the heating function is activated.
NOTE: To display the current water temperature, run the filter system for at least a minute. The water temperature as tested by an external thermometer may vary from the temperature as displayed on the spa panel due to the differing positions of the measurement devices.

Alarms

	Causes	Reasons	Solutions
	The water flow sensors work without pressing the filter or heat button.	1. The water flow sensor flags didn't fall back into the correct position. 2. The water flow sensors are broken.	1. Unplug the pump, strike the side of the pump firmly (but not violently), and plug it back in. 2. Contact your local Bestway Aftersales Service Center for instructions.
	After starting or during the functions of filtering or/and heating, the water flow sensors do not detect water flow.	1. You forgot to remove the 2 stopper caps from inside the pool. 2. The filter cartridges are dirty. 3. Activate the filter or heat system and put your hand in front of the outlet pipe inside the pool to check if you can feel water flowing out. a. If no water flows out the water pump is broken. b. Water flows out but the alarm  appears, the water flow sensors are broken.	1. Remove the two stopper caps before starting the heating system. Refer to the Assembly section in the User's Manual. 2. Remove the filter set from inside the pool and push the filter or heat button. If no alarm appears, clean or change the filter cartridges and re-install the filter set inside the pool. 3. Contact your local Bestway Aftersales Service Center for instructions.
	The pump's thermometer reads the water temperature below 4°C (40°F).	1. The water temperature is lower than 4°C (40°F). 2. If the water temperature is higher than 7°C (44.6°F), the pump's thermometer is broken.	1. The spa is not designed to operate with water temperatures lower than 4°C (40°F). Unplug the pump and only re-start the pump when the water temperature reaches 6°C (43°F). 2. Contact your local Bestway Aftersales Service Center for instructions.
	The pump's thermometer reads the water temperature over 50°C (122°F).	1. The water temperature is over 50°C (122°F). 2. If the water temperature is lower than 45°C (113°F), the pump's thermometer is broken.	1. The spa is not designed to operate with water temperatures greater than 40°C (104°F). Unplug the pump and only re-start the pump when the water temperature reaches 35°C (100°F) or lower. IMPORTANT: Before you re-start the pump, push the pump's reset button. 2. Contact your local Bestway Aftersales Service Center for instructions.
	The pump's thermometer connections have issues.	1. The pump's thermometer connectors are not working properly. 2. The pump's thermometer is broken.	Contact your local Bestway Aftersales Service Center for instructions.
	The manual reset thermal cut-out has a problem.	The manual reset thermal cut-out has been tripped.	1. Unplug the pump and push the reset button, then plug the pump back in. 2. In case the alarm still remains, check the RESET BUTTON section in manual. 3. Contact your local Bestway Aftersales Service Center for instructions.
	104°C (219°F) Fuse fault.	The fuse is disconnected.	Contact your local Bestway Aftersales Service Center for instructions.
	Water leakage inside the pump.	The system has detected some water leakage inside the pump.	Contact your local Bestway Aftersales Service Center for instructions.
	Signal line disconnected.	The signal line between control panel and power board is not well connected.	Contact your local Bestway Aftersales Service Center for instructions.
	Ground Connection Failed	1. The ground bonding of your home has some problem. 2. The pump has some problem.	Contact your local Bestway Aftersales Service Center for instructions.

MAINTENANCE

NOTE: Your spa will require additional air to be added from time to time. Changes in temperature from day to night will change the pressure in the spa and may cause a certain amount of deflation. Please follow the Assembly instructions and drain the spa before inflating to the accurate pressure needed.

CAUTION: YOU MUST ENSURE THE PUMP IS UNPLUGGED BEFORE BEGINNING SPA MAINTENANCE.

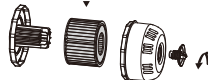
Filter Cartridge Maintenance

NOTE: To ensure your spa water stays clean, check and clean your filter cartridges every day-follow the steps below.

Filter Set



Filter Cartridge 58323

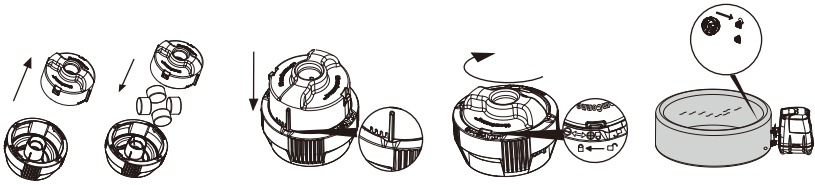


NOTE: We recommend changing your filter cartridges every week. If the filter cartridges remain soiled and discolored they should be replaced.

Water Maintenance

To keep your SPA water clean, chemical balance is necessary. Merely cleaning the filter cartridge is not sufficient for this purpose. Please refer to either of below recommendations:

Using chemical tablets (not included)



Using chemical liquid (not included)

(Refer to the instructions of the liquid chemicals purchased)



Water quality will be directly related to frequency of use, number of users and overall maintenance of the spa. The water should be changed every 3 days if there is no chemical treatment being performed with the water.

NOTE: We recommend you take a shower before using your Lay-Z-Spa. Cosmetic products, lotions, and other residues on the skin can quickly degrade water quality.

NOTE: Remove the chemical dispenser from the spa when the spa is in use

IMPORTANT: After performing chemical maintenance and before using the spa, use a test kit (not included) to test the water chemistry.

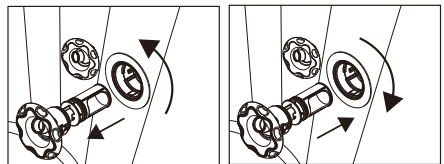
We recommend maintaining your water as per the table below.

pH	Total Alkalinity	Free Chlorine
7.4-7.6	80-120ppm	2-4ppm

NOTE: Damage resulting from chemical imbalance is not covered by the warranty. Pool chemicals are potentially toxic and should be handled with care. There are serious health risks from chemical vapors and the incorrect labeling and storage of chemical containers. Please consult your local pool supply retailer for more information about chemical maintenance. Pay close attention to the chemical manufacturer's instructions. Spa damage resulting from misuse of chemicals and mismanagement of spa water is not covered by the warranty.

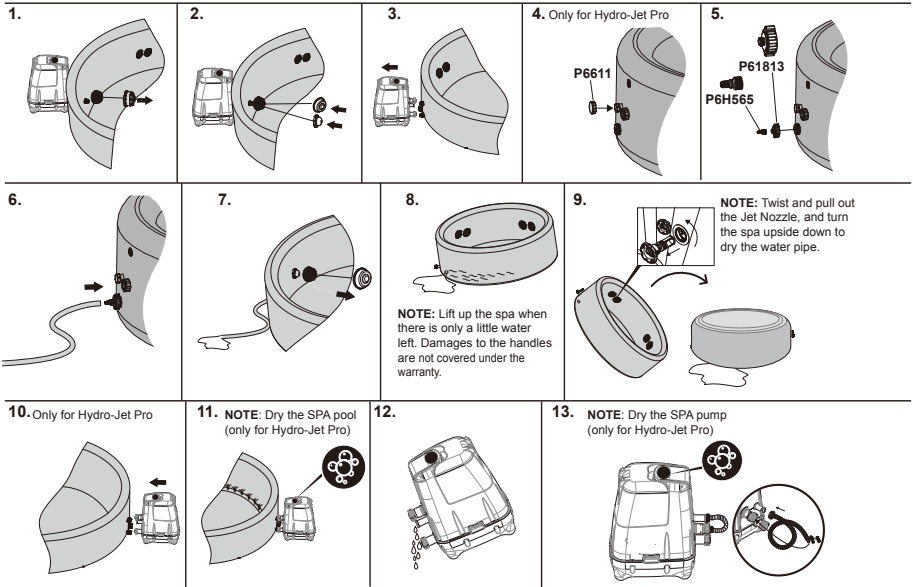
Jet Nozzle Maintenance

1. Twist until hearing a "click" sound, and pull out the Jet Nozzle to clean the debris.
2. Insert and twist clockwise to put it back.



Draining the Spa

NOTE: Drawings for illustration purposes only. May not reflect actual product. Not to scale.



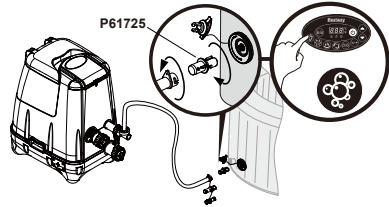
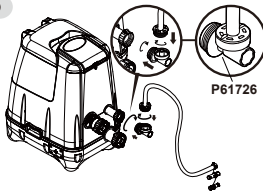
Cleaning the spa Detergent residues and dissolved solids from bathing suits and chemicals may build up on the spa walls. Use soap and water to clean the walls and rinse thoroughly.

NOTE: DO NOT use hard brushes or abrasive cleaners.

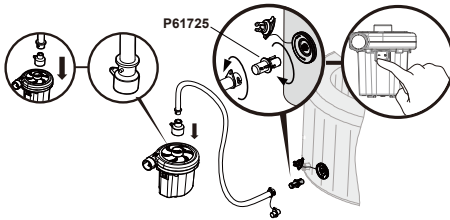
DEFLATION



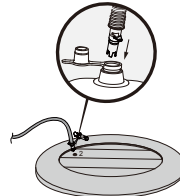
HYDROJET PRO



HYDROJET



Cover



Spa Repair

For Spa inflatable cover

If the spa is torn or punctured, use the provided heavy-duty repair patch.

1. Clean area to be repaired.
2. Carefully peel patch.
3. Press patch over area to be repaired.
4. Wait 30 minutes before inflation.

For Spa Liner

If the spa is torn or punctured, use the provided PVC repair patch and glue (not included) following these steps:

1. Clean and dry the area to be repaired.
2. Cut the provided PVC patch to appropriate size.
3. Use glue (not included) to coat the one side of the newly cut patch. Make sure the glue is evenly distributed.
4. Wait for 30 seconds and then place the cut patch with glue over the damaged area.
5. Smooth out any bubbles of air that may be trapped underneath, and press firmly for two minutes.
6. Wait 30 minutes before inflation.
7. The product is once again ready for use. Repeat this process should further leaks occur.

Lay-Z-Spa Storage

Before storing, make sure the spa and pump are completely dry. This is essential to extend the life of the spa. We recommend using the pump to blow dry the spa, pump and pipes. Remove the filter sets and discard the used filter cartridges. Re-attach the two stopper caps onto the spa's inlet and outlet valves. It is recommended you store the spa in its original package in a warm dry place.



NOTE: Plastic becomes brittle and susceptible to breaking when exposed to subzero temperatures. Freezing can severely damage the spa. Improper winterization of your spa can void your warranty.

Disposal



Meaning of crossed-out wheeled dustbin symbol: Do not dispose of electrical appliances as unsorted municipal waste, use separate collection facilities. Contact your local government for information regarding the collection systems available. If electrical appliances are disposed of in landfills or dumps, hazardous substances can leak into the groundwater and get into the food chain, damaging your health and well-being. When replacing old appliances with new ones, the retailer is legally obligated to take back your old appliance for disposals at least free of charge.

TROUBLESHOOTING Bestway strives to provide the most trouble-free spas on the market. If you experience any problems whatsoever, do not hesitate to contact Bestway or your authorized dealer. Here are some helpful tips to help you to diagnose and rectify some common sources of trouble.

Problems	Probable Causes	Solutions
Pump does not operate	<ul style="list-style-type: none"> - Power failure - Power circuits broken 	<ul style="list-style-type: none"> - Check power source - Contact your local Bestway Aftersales Service Center for instructions
Pump does not heat properly	<ul style="list-style-type: none"> - Temperature set too low - Dirty filter cartridge - The thermal cut-out cuts off - The heating element has failed 	<ul style="list-style-type: none"> - Set the heating system to a higher temperature (refer to Pump Operation section) - Clean/replace the Filter Cartridge (refer to Filter Cartridge Cleaning and Replacement section) - Re-start when the temperature is below 38°C (100°F) - Contact your local Bestway Aftersales Service Center for instructions
Lay-Z-Massage System does not work	<ul style="list-style-type: none"> - Air Pump is overheating - The massage system stops automatically - Air pump is broken 	<ul style="list-style-type: none"> - Unplug the pump and wait two hours until the pump has cooled. Insert the plug and press the massage system button - Press the massage system button to reactivate - Contact your local Bestway Aftersales Service Center for instructions
Pump adapters are not level with the spa adapters	<ul style="list-style-type: none"> - One characteristic of PVC is that it changes shape, which is normal 	<ul style="list-style-type: none"> - Elevate the pump with wood or another type of insulated material to bring the pump's adapters level with the spa's adapters
Spa pool leakage	<ul style="list-style-type: none"> - Spa is torn or punctured - Air valve is loose 	<ul style="list-style-type: none"> - Use provided repair patch - Using soapy water, cover the air-valve to check if air is leaking, if so, use the provided wrench to fasten the air-valve following these steps: <ol style="list-style-type: none"> 1. Deflate the SPA. 2. With one hand, hold the backside of the air valve from the inner side of the spa wall and turn the wrench clockwise.
Water is not clean	<ul style="list-style-type: none"> - Insufficient filtering time - Dirty Filter Cartridge - Improper water maintenance 	<ul style="list-style-type: none"> - Increase filtration time - Clean/replace the Filter Cartridge (refer to Filter Cartridge Cleaning and Replacement section) - Refer to the chemical manufacturer's instructions
PRCD test failed	<ul style="list-style-type: none"> - There is a defect in your spa 	<ul style="list-style-type: none"> - Contact your local Bestway Aftersales Service Center and return the SPA.
HydroJet System does not work	<ul style="list-style-type: none"> - Water pump is overheating - Water pump is broken 	<ul style="list-style-type: none"> - Unplug the pump and wait for two hours until the pump has cooled. Plug in and try again - Contact your local Bestway Aftersales Service Center for instructions
Control panel not working	<ul style="list-style-type: none"> - The control panel has an auto-lock, which is activated after 5 minutes of inactivity. The LED display has one icon: . If the lock icon is highlighted, the control panel is locked. - Control panel is not activated. 	<ul style="list-style-type: none"> - To unlock the control panel, press the  button for 3 seconds. If the control panel will not unlock, restart the pump – unplug and plug in the pump. - Press the on/off button for 2 seconds - If the problem persists, please contact your local Bestway Aftersales Service Center for instructions.
What kind of chemicals should be used for water maintenance?	<p>Please consult your local chemical supplier for information about chemical maintenance. Pay close attention to the chemical manufacturer's instructions.</p>	
Water leaks from the adapters between the pump and spa	<p>Insert the three stopper caps on to the spa's ports to prevent water from escaping and disconnect the pump. Check and make sure the seals are placed correctly inside the pump adapters. If the seals are missing or not installed correctly, please contact your local Bestway Aftersales Service Center for instructions. If the seals are correctly in place, reconnect the pump to the spa and hand-tighten the adapters.</p>	



For support please visit us at:
www.bestwaycorp.com/support

©2018 Bestway Inflatables & Material Corp.

All rights reserved/Tous droits réservés/Todos los derechos reservados/Alle Rechte vorbehalten/Tutti i diritti riservati

®™ Trademarks used in some countries under license to/

Marques ®™ utilisées dans certains pays sous la licence de/

Marcas comerciales ®™ utilizadas en algunos países bajo la licencia de/

®™ Die Warenzeichen werden in einigen Ländern verwendet unter Lizenz der/

®™ Marchi utilizzati in alcuni paesi concessi in licenza a

Bestway Inflatables & Material Corp., No.3065 Cao An Road, Shanghai, 201812, China.

Manufactured, distributed and represented in the European Union by/

Fabriqué, distribué et représenté dans l'Union Européenne par/Fabricado, distribuido y representado en la Unión Europea por/

Hergestellt, vertrieben und in der Europäischen Union vertreten von/Prodotto, distribuito e rappresentato nell'Unione Europea da

Bestway (Europe) S.r.l., Via Resistenza, 5, 20098 San Giuliano Milanese (Milano), Italy

Distributed in North America by/Distribué en Amérique du Nord par/Distribuido en Norteamérica por

Bestway (USA) Inc., 3411 E. Harbour Drive, Phoenix, Arizona 85034, United States of America Tel: 1-855-838-3888 (For U.S. and Canada)

Distributed in Latin America by/Distribué en Amérique latine par/Distribuido en Latinoamérica por/Distribuido na América Latina por

Bestway Central & South America Ltda, Salar Ascotan 1282, Parque Enea, Pudahuel, Santiago, Chile

Distributed in Australia & New Zealand by **Bestway Australia Pty Ltd, 98-104 Carnarvon Street, Silverwater, NSW 2128, Australia**

www.bestwaycorp.com

Made in China / Fabriqué en Chine / Fabricado en China / Hergestellt in China / Prodotto in Cina